

Tenda



RP3

Security Pan/Tilt Camera 1080P



RP3

Security Pan/Tilt Camera 1080P

Products Description

The Pan/Tilt Security Camera RP3 is a high-performance home monitoring camera that integrates such functions as 360 ° visual coverage, 1080P video, full-duplex two-way audio, sound & light alarm and DIY audio. Three colors of your choice, including white, black and gray. It is commonly used in indoor monitoring scenarios, such as homes, shops, offices and classrooms.

Selling Points



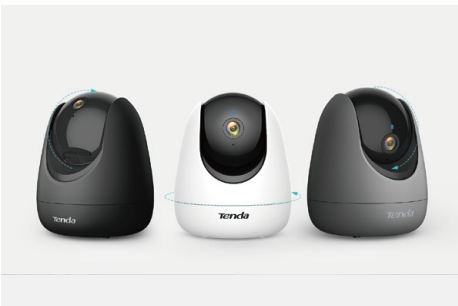
White/Black/Gray

Multiple color choices are provided, including white, black and gray.



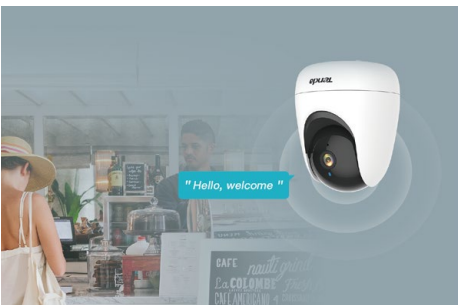
Voice Control

Alexa voice control over camera, easy to safeguard your family.



360° All-round Vision

High speed pan/tilt design enables flexible rotation in all directions. RP3 covers 360° horizontally and 155° vertically (90° up, 65° down) which leaves zero blind zones at all.



Customize your voice alerts

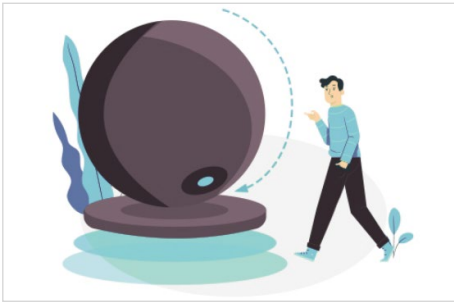
You can customize 3 personalized audio message for shop greeting or theft warning.



Auto Targeting and Tracking

Based on the AI machine vision algorithms, the "Smart Tracking" can automatically tracks the movements and store the video.

Selling Points



Obscuring Lens

The camera rotate downward when the master comes home by tapping on the APP.



Two-way Audio

Real-time full-duplex two-way audio communication function enables you to chat with your family anytime and anywhere, bringing the most affectionate greetings to your beloved.



MicroSD Card / Cloud Storage / NVR Storage

The video can be stored in local Micro SD card, cloud stored and NVR Storage. Even an vandal accident happens to your devices, you can still retrieve videos based on cloud recording.



AI Human Detection

Based on AI deep learning algorithms, CP3 can detect human shape and other motion. It recognizes the movement accurately and captures suspicious status automatically, and the resulting alarms will be sent to your mobile in real time.



Sound and Light Alarm

When intrusion is detected during the alert period, a sound and white flashing light alarm will be triggered to warn illegal intruders. At the same time, the alarm message will be sent to your mobile.

Technical Specifications

Hardware Specifications	
Pan/Tilt	Horizontal rotation: 355° All-round Vision:360° vertical rotation: 155° (90° up, 65° down) support physical shutter lens
Ports	Storage: Micro SD card (Up to 256G, Class10 and above storage card) Power: DC 9V $\overline{=}$ 1A
Lens	4mm@F2.2
Button	Reset x 1
LED Indicator	Red LED indicatorx1, blue LED indicatorx1
Antenna	Internal antenna
Product Size	103mmx88mmx88mm(4.1"x3.5"x3.5")
Color	White, Black, Grey
Video Parameter	
Resolution	1920x1080
Coding Standard	Smart H.264
Day and Night Shift Mode	ICR infrared filter type
Noise Reduction	3D digital noise reduction
DWDR	Support
Backlight Compensation	Support
ROI	Support
Wireless Parameter	
Wireless Standard	IEEE 802.11b/g/n @2.4GHz
Wireless Rate	150Mbps
Security	64/128-bit WEP, WPA/WPA2, WPA-PSK/WPA2-PSK
Channel Width	20MHz
Frequency Band	2.4GHz from 2412MHz to 2472MHz
Transmit Power	2.4 G: <0.8W(EIRP)
Modulation	DSSS/CCK/OFDM
Others	
Smart Alarm	Motion detection, Human detection

Alarm	Sound and light alarm
Audio	Full-duplex two-way audio
DIY Audio	Up to 3 personalized audio
Auto Patrol	6 preset patrol location
Infrared Night Vision Distance	12 Meters (40ft) (Depending on environment)
Temperature	Operating temperature: -10°C~ 45°C Storage temperature: -40°C~70°C
Humidity	Operating humidity: 10%~95%RH (non-condensing) Storage humidity: 3% ~ 95%RH (non-condensing)
Certification	CE, RoHS, FCC, RCM
Package Contents	Security Pan/Tilt Camera, Power adapter (cord length: 3m) , Wall-mounted accessory kit, Quick installation guide

SHENZHEN TENDA TECHNOLOGY CO.,LTD.

Tenda Technology Bldg.Int' IE-City,
#1001 Zhong Shan Yuan Rd.,Nanshan District,Shenzhen China.

E-mail:support@tenda.com.cn
Tel:+86-755-2765 7098
Fax:+86-755-2765 7178
PC:518055

